

Tannery Bridge (Downton) Replacement Scheme

WCC Bridge Number C12/217

Progress Report: Week 22

This report details progress for the period 4th August – 10th August 2007

Summary of progress

- The piling sub-contractor has completed the piling operations in Span 2.
- The cast pile cap to the eastern abutment of span1 has been constructed (see photographs 3 and 4).
- Works have commenced on the bridge deck units on the Downton Industrial Estate.
- The excavation and clearance has continued in Spans 3 and 4 in preparation for the piling operations.
- The pile caps to the eastern abutment in Span 1 have been exposed in readiness for the casting operations. (see photograph 1).

Notable Events

- None.

Weather

Warm and sunny.

Planned works for week ahead

- The casting of the concrete bridge deck units will continue.
- Works will continue to complete the pile caps in Spans 1 and 2 in preparation for the casting operations.
- Casting will commence on the pile cap to the western abutment of Span 1.
- Excavation works in spans 3 and 4 will be completed in readiness for the piling operations.

Meetings held

- None.

Proposed Meetings

- None.

Other programming items or issues

- Outline Works programme detailed in Appendix 1. Next update – 20th August 2007
- Dates of forthcoming road closures: to be confirmed

Other information

Tannery Bridge Helpline – 07890 517350



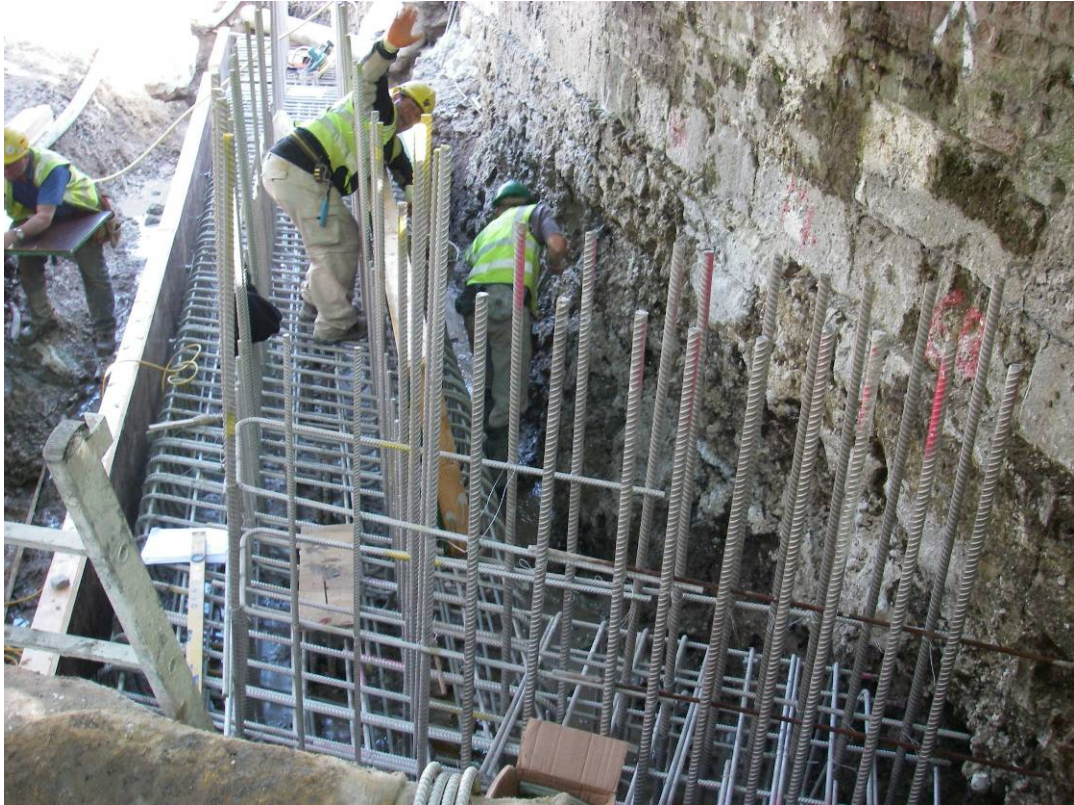
Photograph 1
Exposing the pile caps in
Span 1



Photograph 2
Lifting the Bridge Deck Units,
on the Downton Industrial Estate



Photograph 3
The Eastern Abutment Pile Cap in
Span1



Photograph 4
The Eastern Abutment Pile Cap in
Span 1